



Royal Commission
into Violence, Abuse, Neglect and Exploitation
of People with Disability

Research Report

Convention on the Rights of Persons with Disabilities

Rosemary Kayess and Therese Sands
Easy Read version



September 2020

How to use this report



Rosemary Kayess and Therese Sands wrote this report for the Disability Royal Commission (the Royal Commission).

When you see the word 'we', it means the Royal Commission.



We wrote this report in an easy to read way.

We use pictures to explain some ideas.



We have written some words in **bold**.

This means the letters are thicker and darker.



We explain what these words mean.

There is a list of these words on page 14.



This Easy Read report is a **summary** of a report called *Convention on the Rights of Persons with Disabilities: Shining a light on Social Transformation*.

A summary only includes the most important ideas.



You can find the other report on **our website.**



You can ask for help to read this report.
A friend, family member or support person may be able to help you.

What's in this report?

What is the UN Convention?	5
What does the UN Convention say?	6
Why do we need the UN Convention?	8
What is this Royal Commission about?	12
Word list	14
Contact us	17

What is the UN Convention?



The United Nations Convention on the Rights of Persons with Disabilities is an agreement between different countries.



Some people call it the CRPD.

In this report we call it the UN Convention.



The UN Convention says people with disability should have the same **human rights** as everybody else.



Human rights are rules about how everybody should be treated:

- fairly
- equally.

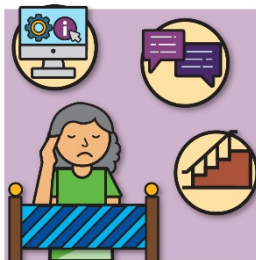
What does the UN Convention say?



The UN Convention is based on a **social model of disability**.



The social model of disability is about the **barriers** people with disability deal with.



A barrier is something that stops you from doing something you:

- need to do
- want to do.



The UN Convention says the barriers people with disability face are there because society puts them there.

The barriers are not there because of the disability.

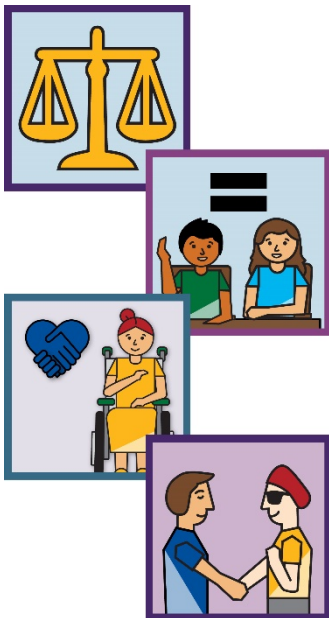


The UN Convention says people with disability are an important part of making our world **diverse**.



Diverse means we accept that the world has different kinds of people.

The UN Convention says people with disability have the right to be treated:



- fairly
- equally
- with dignity
- with respect.



The UN Convention says people with disability have the right to live their life the way they want to.

Why do we need the UN Convention?



People with disability asked for rules to be made to make sure they have the same human rights as people without disability.



These rules were made to stop **ableism**.



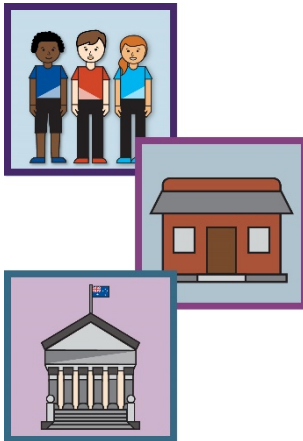
Ableism is an **attitude** that people without disability are better than people with disability.

Attitudes are what you:

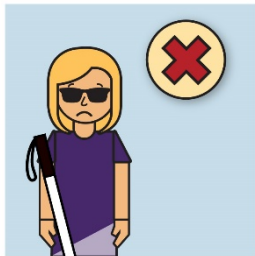


- think
- feel
- believe.

Ableism can affect how people with disability are treated by:



- people
- organisations
- governments.

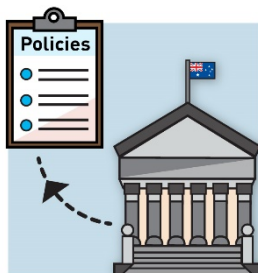


Ableism can stop people with disability doing things people without disability do.

The attitudes governments have can affect their:



- laws
- **policies**
- ways of working.



Policies are government plans for how to do things.

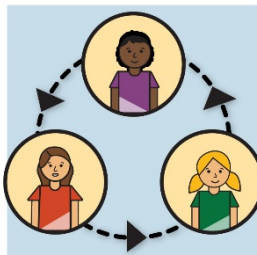
The UN Convention says governments must have policies and laws to make sure people with disability:



- have the same human rights as people without disability



- are included in the community.



Attitudes can spread through the community.

People can develop poor attitudes towards people with disability if they never:



- meet or spend time with people with disability



- see or hear people with disability in the world around them.

Poor attitudes can cause people with disability to experience:



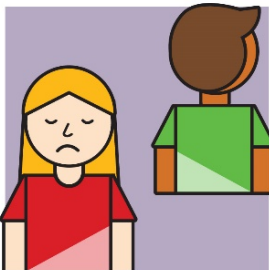
- **violence**

Violence is when someone is hurts you physically.



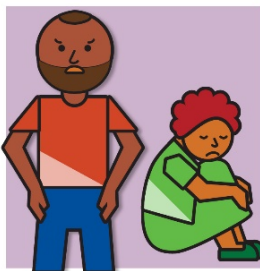
- **abuse**

Abuse is when someone treats you badly.



- **neglect**

Neglect is when someone is not helping you the way they are supposed to help you.



- **exploitation**

Exploitation is when someone takes advantage of you.

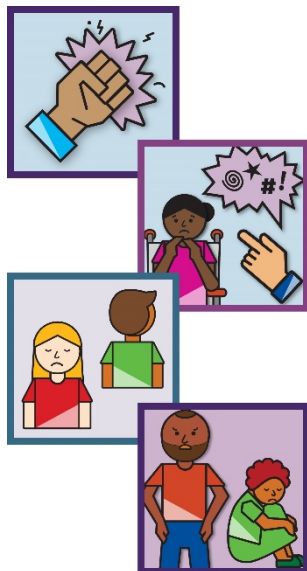
What is this Royal Commission about?



This Royal Commission is called the Royal Commission into Violence, Abuse, Neglect and Exploitation of People with Disability.

We usually call it the Royal Commission.

We need this Royal Commission because we know that people with disability experience:



- violence
- abuse
- neglect
- exploitation.



Our work is based on the important ideas in the UN Convention.

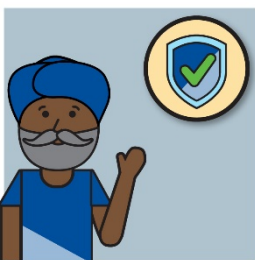
These important ideas will help us write a plan for how we all can:



- make things better



- make sure we include people with disability



- keep people with disability safe.

Word list

This list explains what the **bold** words in this report mean.



Ableism

Ableism is an attitude that people without disability are better than people with disability.



Abuse

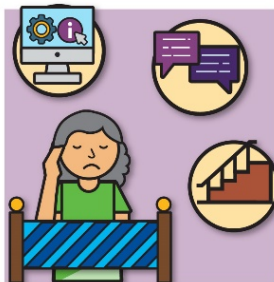
Abuse is when someone treats you badly.



Attitudes

Attitudes are what you:

- think
- feel
- believe.



Barrier

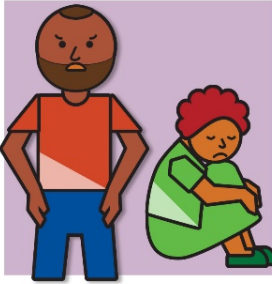
A barrier is something that stops you from doing something you:

- need to do
- want to do.



Diverse

Diverse means we accept that the world has different kinds of people.



Exploitation

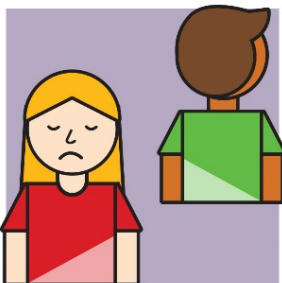
Exploitation is when someone takes advantage of you.



Human rights

Human rights are rules about how everybody should be treated:

- fairly
- equally.



Neglect

Neglect is when someone is not helping you the way they are supposed to help you.

Social model of disability



The social model of disability is about the barriers people with disability face.

It says the barriers are there because society puts them there.

They are not there because of the disability.



Summary

A summary only includes the most important ideas.



Violence

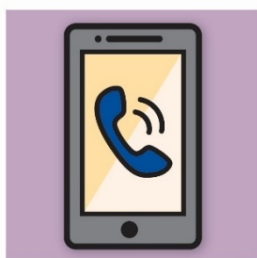
Violence is when someone is hurts you physically.

Contact us



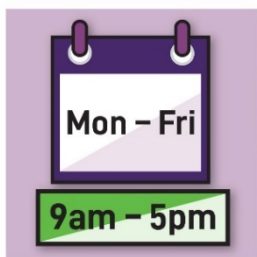
You can email us at

DRcenquiries@royalcommission.gov.au



If you have a question, you can call us on

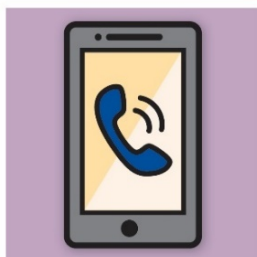
1800 517 199.



We are available on Monday to Friday
between 9am and 5pm.



We are not available on public holidays.



You can also call the National Relay Service
on **133 677.**



You can write to us at:

GPO Box 1422

Brisbane

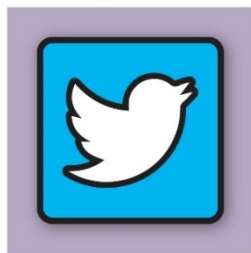
QLD 4001

You can follow us on:



Facebook

www.facebook.com/disability.royalcommission.gov.au



Twitter

[@DRC_AU](https://twitter.com/DRC_AU)



You can also subscribe to our newsletter

Connect by sending an email to:

DRCmailinglist@royalcommission.gov.au



Royal Commission
into Violence, Abuse, Neglect and
Exploitation of People with Disability