



# Younger people in residential aged care

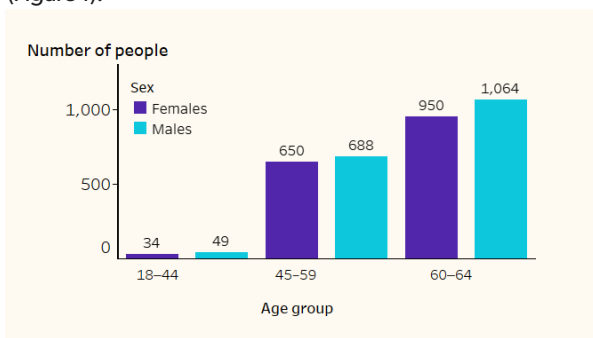
The Australian Government is working to reduce the number of younger people (under the age of 65) going into residential aged care, and to help younger people who are already in residential aged care to move into age-appropriate accommodation with the supports they need. This factsheet presents highlights from the GEN resource page [Younger people in residential aged care](#).

## Number of younger people in residential aged care



## Age distribution

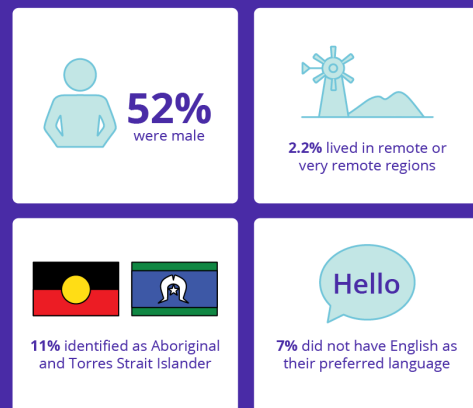
At 31 December 2021, the majority (59%) of younger people living in permanent residential aged care were aged 60–64. Nearly 4 in 10 (39%) were aged 45–59, and 2% were aged 18–44. The age distribution was similar for men and women (Figure 1).



**Figure 1:** Age distribution of men and women under age 65 in permanent residential aged care, at 31 December 2021

## Characteristics of younger people in residential aged care

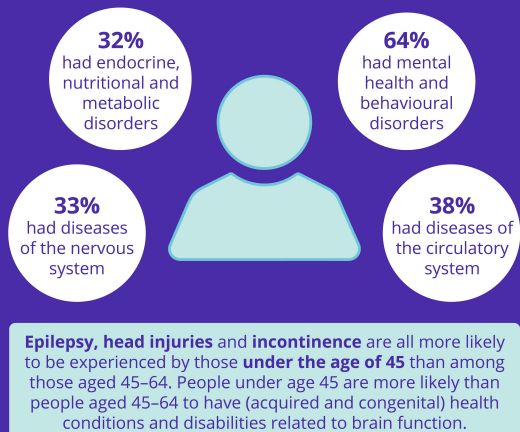
At 31 December 2021, among younger people in residential aged care in Australia:



## Health conditions

Younger people living in residential aged care often have multiple health conditions.

In 2019–2020, among younger people in residential aged care in Australia whose health conditions were known:



Source: Analysis of younger people living in residential aged care: Report prepared for the Department of Health. Ipsos, July 2020. Data refer to the period July 2019 to February 2020.

# Younger People in Residential Aged Care Strategy 2020–25

The Strategy sets out to achieve the goal of reducing the number of younger people in residential aged care through the following targets, apart from in exceptional circumstances:

## Target 1 - No people under the age of 65 entering residential aged care by 2022

During October to December 2021, **131 people** under the age of 65 were admitted into permanent residential aged care in Australia. This is a **25% decrease** from the same period in 2020.

## Target 2 - No people under the age of 45 living in residential aged care by 2022

At 31 December 2021, there were **83 people** aged under 45 living in residential aged care in Australia. This is a **24% decrease** from the same date in 2020.

## Target 3 - No people under the age of 65 living in residential aged care by 2025

At 31 December 2021, there were **3,435 people** aged under 65 living in residential aged care in Australia. This is a **21% decrease** from the same date in 2020.

## Number of younger people in residential aged care by state and territory

The number of younger people living in permanent residential aged care in Australia has been steadily decreasing. This has largely been driven by the reduction in admissions of younger people to residential aged care. The number of younger people in permanent residential aged care decreased in every state and territory between 2020 and 2021 (Figure 2).

### Reference

National Disability Insurance Agency (NDIA) 2022. NDIS Quarterly Report to disability ministers 31 December 2021.

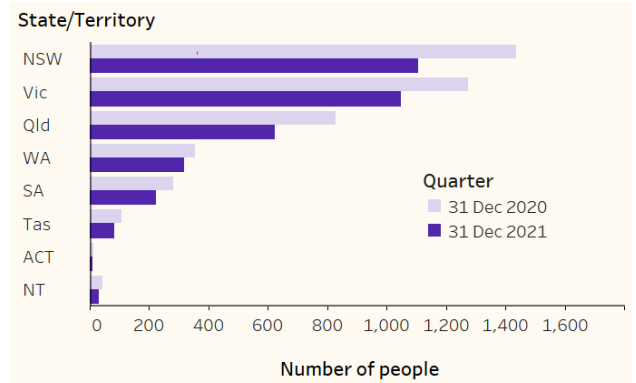
### Data notes

1. Unless otherwise noted, all analyses presented in this Factsheet are based on AIHW analysis of the Department of Health's Ageing and Aged Care Data Warehouse, February 2022.
2. Current length of stay presented in this Factsheet is based on a person's current length of stay in permanent residential aged care, that is the length of time the person has been in permanent aged care during the current stay. This does not include time spent during other stays.
3. Exits from permanent residential aged care include exits classified as 'final discharge' and do not include transfers to other aged care facilities.

### Suggested citation

Australian Institute of Health and Welfare 2022. GEN fact sheet December 2021 Younger people in residential aged care. Canberra: AIHW.

Any enquiries about copyright and/or this fact sheet should be directed to the Australian Institute of Health and Welfare, GPO Box 570, Canberra ACT 2601, Tel: (02) 6244 1000, Email: <[info@aihw.gov.au](mailto:info@aihw.gov.au)>



**Figure 2:** Number of people under age 65 in permanent residential aged care, by state and territory, at 31 December 2020 and 31 December 2021.

## Exits and length of stay

People leave residential aged care for a number of reasons. When a person leaves an aged care service it is referred to here as an exit. In the year from 1 January 2021 to 31 December 2021, 791 younger people exited from permanent residential aged care. Seven in ten (71%) exits from permanent residential aged care (562 people) had death recorded as the reason for leaving. Among the remaining exits, 54% (124 people) returned to family or home, 12% (27 people) exited to hospital, and 34% (78 people) exited to a destination recorded as an other location.

Access to NDIS supports has contributed to the ability of younger people to exit permanent residential aged care to a more appropriate setting. Based on data from the National Disability Insurance Scheme (NDIS), at 31 December 2021, 2,938 younger people in residential aged care had an approved NDIS plan, including 765 people who had a goal to leave residential aged care (NDIA, 2022).

The average length of stay was 4 years and 8 months for younger people who were living in permanent residential aged care on 31 December 2021. See data notes for a description of how length of stay is calculated.

## Where can I find out more?

**GEN Resource: Younger people in residential aged care** (including additional data tables)  
<<https://www.gen-agedcaredata.gov.au/Resources/Younger-people-in-residential-aged-care>>



© Australian Institute of Health and Welfare 2022

This product, excluding the AIHW and GEN logos, Commonwealth Coat of Arms and any material owned by a third party or protected by a trademark, has been released under a Creative Commons BY 3.0 (CC BY 3.0) licence

(<<http://creativecommons.org/licenses/by/3.0/au/>>).

You may distribute, remix and build upon this work. However, you must attribute the AIHW as the copyright holder of the work in compliance with our attribution policy available at <[www.aihw.gov.au/copyright/](http://www.aihw.gov.au/copyright/)>. The full terms and conditions of this licence are available at <<http://creativecommons.org/licenses/by/3.0/au/>>.

Information and data on aged care in Australia

[GEN-agedcaredata.gov.au](http://GEN-agedcaredata.gov.au)

## Contact

GPO Box 570, Canberra, ACT 2601  
(02) 6244 1000 | [GEN@aihw.gov.au](mailto:GEN@aihw.gov.au)

